



FOL-DA-TANK™

PRODUCT CATALOG

JULY 2021



PORTABLE FOLDING SINGLE LANE TANK



FOL-DA-TANK™



THE FIRST CHOICE OF FIRST RESPONDERS



SINGLE LANE TANK TYPE I



FEATURES

- Steel or Aluminum Frame
- 22 oz HPR (High-Performance Rubber) Yellow or Red
- 22 oz Vinyl – Red, Yellow, Orange, Black or Blue
- 28 oz Vinyl – Red, Yellow, Orange, Black or Blue
- You can order 22 oz sides with 28 oz floor

Volume US gal	Open Dimensions ft (L x W x H)	Closed Dimensions ft (L x W x H)
2000	14'x8"x29"	14'x8"x29"
2500	16'x9"x29"	16'x8"x29"
3000	16'x10"x29"	16'x8"x29"

Can be ordered as a double fold.

SINGLE LANE TANK TYPE II



Volume US gal	Open Dimensions ft (L x W x H)	Closed Dimensions ft (L x W x H)
2000	19'x7'9"x29"	11'x8"x29"
2500	22'x8"x29"	14'x8"x29"
3000	23'x9"x29"	14'x8"x29"

SINGLE LANE TANK MAX



Volume US gal	Open Dimensions w/o bladder ft (L x W x H)	Open Dimensions ft (L x W x H)	Closed Dimensions ft (L x W x H)
1000/2500	8'3"x8'3"x29"	8'3"x22'3"x29"	8'3"x10"x29"
1500/3500	10'3"x10'3"x29"	10'3"x24'8"x29"	10'3"x10"x29"
2100/5000	11'3"x11'3"x29"	11'3"x26'3"x29"	11'3"x10"x29"

Max Strainer can be placed inside bladder and used with Max elbow shown. Option to not have anything mounted to bladder and still use normal Low Flow Strainer through sidewall or over the top

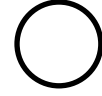
PORTABLE FOLDING FRAME TANK



FRAME TYPES



7/8" OD 14GA Steel Tubing
(Standard steel frame)



7/8" OD 18GA Steel Tubing
(Decon pools)



1" sq x 1/8" Wall Radius Corner
Aircraft Aluminum
(Standard aluminum frame)



1/2" Schedule 40 Aluminum Pipe
(Decon pools)



1" Schedule 40 Aluminum Pipe
Diagrams are not to scale

FEATURES

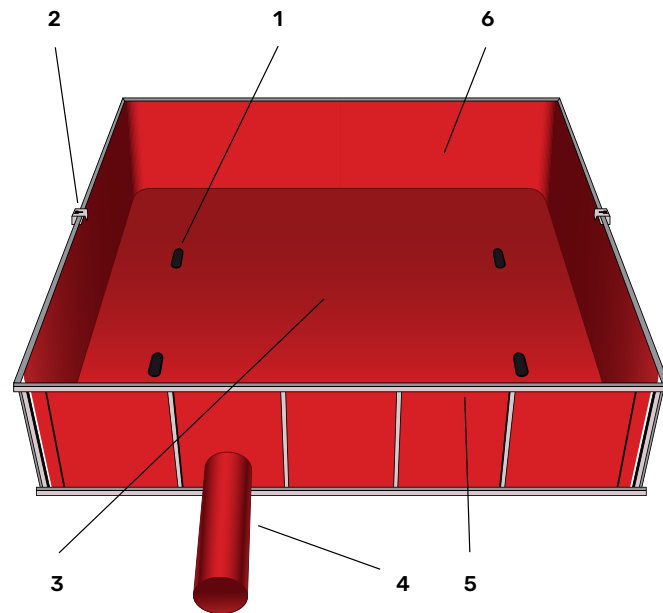
- Solid brass grommets. Closely spaced to prevent the liner from sagging
- Liner pick-up grab handles
- Quick release drain sleeve
- 22 oz vinyl or HPR® sides with heavy duty 28 oz vinyl base liners available
- Repair kits available for all liner fabrics

LINER FABRICS & COLORS

- 22 oz HPR® – Red or Yellow
HPR has superior cold-crack, cut & abrasion resistance without adding weight
- 22 oz Vinyl – Red, Yellow, Orange, Black or Blue
- 28 oz Vinyl – Red, Yellow, Orange or Black



Colors shown are approximate



- 1 Easy Lift Handles** – Helps the firefighter to pick up and fold the liner when closing the tank. No zigzag pattern to interfere when using low-level strainers and power jet siphons. Easy Lift Handles can also be placed on the side walls for easy use. Grab handle kits are also available for existing tanks.
- 2 Hinge Protectors** – The patented “pinch free” design prevents the firefighter from pinching their hands when opening and closing the folding frames. No loss of frame strength with this design. US Patent #7,938,291 & Canadian Patent #2,624,553
- 3 Heavy-Duty Floor Design** – When ordering a 22 oz vinyl or HPR® tank, you can get an optional 28 oz vinyl floor.
- 4 Quick Release Drains** – (See photo to the left)
- 5 Frames Available** – (See page 4)
- 6 Liner Fabric Available** – FOL-DA-TANK fabrics have been field tested and used in the most arid climates of the Middle East and cold climates of Alaska. (See page 4)
- 7 NFPA Compliant** – p. 1142-33 c.14 Portable Drop Tanks
- 8 Lifetime Warranty** – FOL-DA-TANK, LLC provides a limited lifetime warranty for workmanship and material defects on its manufactured products. Send pictures and descriptions of the issue to your FOL-DA-TANK representative for a prompt response.

Volume US gal/liters	Open ft/m (L x W x H)	Steel Closed ft/m (L x W x H)	Alum. Closed ft/m (L x W x H)	Double-Fold Steel Closed ft/m (L x W x H)	Double-Fold Alum. Closed ft/m (L x W x H)	Steel Weight lbs	Alum. Weight lbs
600/2200	6'3"x6'3"x29"/ 1.8x1.8x0.71	6'3"x7"x29"/ 1.8x0.18x0.71	6'3"x8"x29"/ 1.8x0.2x0.71	3'x15"x29"/ 0.91x0.38x0.71	3'x16"x29"/ 0.91x0.41x0.71	95	70
1000/3800	8'3"x8'3"x29"/ 2.4x2.4x0.71	8'3"x7"x29"/ 2.4x0.18x0.71	8'3"x8"x29"/ 2.4x0.2x0.71	4'3"x15"x29"/ 1.3x0.38x0.71	4'3"x16"x29"/ 1.3x0.41x0.71	125	95
1500/5600	10'3"x10'3"x29"/ 3x3x0.71	10'3"x7"x29"/ 3x0.18x0.71	10'3"x8"x29"/ 3x0.2x0.71	5'3"x15"x29"/ 1.6x0.38x0.71	5'3"x16"x29"/ 1.6x0.41x0.71	145	110
2100/7500	11'3"x11'3"x29"/ 3.4x3.4x0.71	11'3"x7"x29"/ 3.4x0.18x0.71	11'3"x8"x29"/ 3.4x0.2x0.71	5'9"x15"x29"/ 1.7x0.38x0.71	5'9"x16"x29"/ 1.7x0.41x0.71	165	125
2500*/9500	12'3"x12'3"x29"/ 3.7x3.7x0.71	12'3"x7"x29"/ 3.7x0.18x0.71	12'3"x8"x29"/ 3.7x0.2x0.71	6'3"x15"x29"/ 1.9x0.38x0.71	6'3"x16"x29"/ 1.9x0.41x0.71	175	130
3000*/11300	13'3"x13'3"x29"/ 4x4x0.71	13'3"x7"x29"/ 4x0.18x0.71	13'3"x8"x29"/ 4x0.2x0.71	6'9"x15"x29"/ 2.1x0.38x0.71	6'9"x16"x29"/ 2.1x0.41x0.71	185	135
3500*/13250	14'3"x14'3"x29"/ 4.2x4.2x.71	14'3"x7"x29"/ 4.2x0.18x0.71	14'3"x8"x29"/ 4.2x0.2x0.71	7'3"x15"x29"/ 2.2x0.38x0.71	7'3"x16"x29"/ 2.2x0.41x0.71	210	155
4000*/15000	15'3"x15'3"x29"/ 4.6x4.6x0.71	15'3"x7"x29"/ 4.6x0.18x0.71	15'3"x8"x29"/ 4.6x0.2x0.71	7'9"x15"x29"/ 2.4x0.38x0.71	7'9"x16"x29"/ 2.4x0.41x0.71	250	185
5000*/19000	17'x17"x29"/ 5.2x5.2x0.71	17'x7"x29"/ 5.2x0.18x0.71	17'x8"x29"/ 5.2x0.2x0.71	8'9"x15"x29"/ 2.7x0.38x0.71	8'9"x16"x29"/ 2.7x0.41x0.71	300	220

*All Folding Frame Tanks come with patented pinch-free design. *Comes standard with 2 drain sleeves.*



SUPPLY LINE HOLDER

The Supply Line Holder couples hose securely to any portable water tank frame.

FEATURES

- Added filling source
- Minimizes waste and turbulence
- Frees up manpower for other important duties
- Aluminum casting and Steel bracket
- NST and Storz available (Specify when ordering)
- Pump tested to 200 PSI for single supply line holder
- Pump tested to 400 PSI for double supply line holder
- Round or square housing designs available for 4" and 5"
- Corner mounts available
- Convenient quick clamping with safety pins
- NFPA 1142 compliant

Part No.
S = Single D = Double

SLHS 2.5

SLHD 2.5

SLHS 3.0

SLHD 3.0

SLHS 4.0

SLHS 5.0



TARPAULINS

FEATURES

- Strong, lightweight 10 oz Vinyl (Red, Yellow, Green, Blue or Black)
- Certified flame retardant
- 12 oz Canvas (Olive Drab Only)
- 22 oz HPR (Red or Yellow)
- 22 oz Vinyl (Black, White, Royal Blue, Red or Yellow)
- 28 oz Vinyl (Orange, Red, Yellow or Black)
- Custom sizes available through special order
- Debris bags

Part No. **Dimensions**
ft/m

SC 9x12 9'x12'/2.7x3.7

SC 12x14 12'x14'/3.7x4.3

SC 12x18 12'x18'/3.7x5.5

SC 14x18 14'x18'/4.3x5.5

DB 6x8 6'x8'/1.8x2.4



CARRY RACKS

Lightweight Carry Rack can be mounted on a running board or inside a compartment. There are two sizes. Small is for 2.5", and 3" Float Dock® strainers and all Low-Flow strainers. Large is for 4", 4.5", 5" and 6" Float Dock® strainer.

Part No. **Size** **Part No.**
Float Dock **Low-Flow**

FDSCR-SM Small LFSCR-SM

FDSCR-LG Large LFSCR-LG



GROUND COVER FOR FRAMED TANKS AND SELF-SUPPORTING TANKS

Protects tank bottoms from excessive wear, abrasion and punctures. Tank life is increased. Stays cleaner. Heavy-duty 22 oz red or yellow HPR; 22 oz black, white, royal blue, red or yellow vinyl; or 28 oz orange, red, yellow, or black vinyl. All seams heat sealed for longer life. Available in the same sizes as all FOL-DA-TANK and self-supporting tanks.

Part No. **Dimensions**
ft/m

FDTC-600 6'3"x6'3"/2x2

FDTC-1000 8'3"x8'3"/2.5x2.5

FDTC-1500 10'3"x10'3"/3x3

FDTC-2100 11'3"x11'3"/3.4x3.4

FDTC-2500 12'3"x12'3"/3.7x3.7

FDTC-3000 13'3"x13'3"/4x4

FDTC-3500 14'3"x14'3"/4.3x4.3

FDTC-4000 15'x15'/4.6x4.6

FDTC-5000 17'x20'/5.2x6

Part No. **Dimensions**
ft/m

SSTC-500 6'6"x6'6"/2x2

SSTC-1000/1200 8'10"x8'10"/2.7x2.7

SSTC-1500/1600 11'10"x11'10"/3.6x3.6

SSTC-1800/2000 12'5"x12'5"/3.8x3.8

SSTC-2500 13'6"x13'6"/4x4

SSTC-3000 14'9"x14'9"/4.5x4.5

SSTC-4000 16'x16'/4.8x4.8

SSTC-5000 19'x19'/5.8x5.8



BAR SLEEVE CLAMP

The Bar Sleeve Clamp controls water flow between tanks.
Part No. BSLC



HOSE STAND

This lightweight aluminum Hose Stand is designed to support a large diameter hose when filling and draining a Self-Supporting Tank or ROL-LA-TANK®. This hard suction hose support stores easily in limited spaces.
Part No. HSS



STAGING MAT

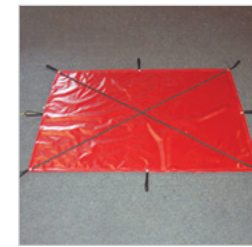
FEATURES

- Velcro panels form a 3'x7' or 6'x10' mat
- Color coded and labeled
- Ribbed storage area for air cylinders
- Comes standard with green and red panels marked FULL and EMPTY
- Carrying case included



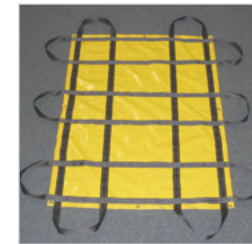
SMOKE EJECTOR HOLDER

The Smoke Ejector Holder is made from 6061 aluminum tubing with heavy-duty ratchet adjustment to exert maximum pressure for secure holding against any door jamb or window frame. The rubber grip pads tightly grip to smooth surfaces and easily adjusts from 28" to 40".
Part No. SEH



DEBRIS CARRIER

SIZES 6'x8' and 8'x8' available in canvas, 22 oz vinyl and 22 oz HPR® material



SOFT STRETCHER

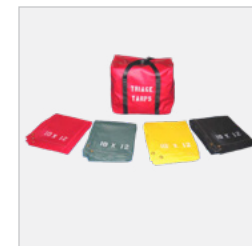
The flexible Stretcher measures 60"x80". The soft stretcher can be also used to move small children or adults in an emergency situation. Unlike fixed stretchers the soft stretcher can be easily maneuvered through stairwells, doorways and other confined spaces. Made with (10) heavy-duty web handles and 28 oz vinyl material.



FLANGE MOUNTING PLATE

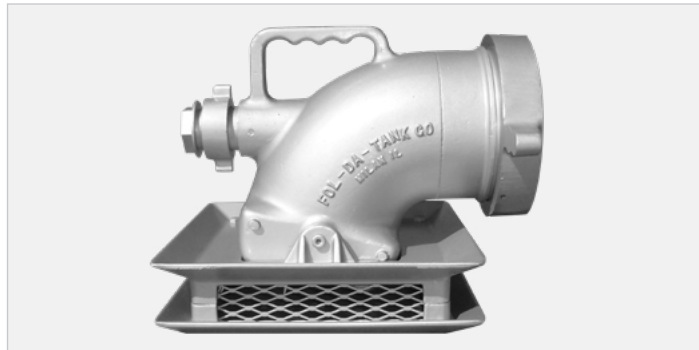
FEATURES

- Stabilize inner/outer flange set
- Through the wall design
- Reduces pump priming time, cavitation
- Connect two tanks or a low flow strainer
- Retrofit any aluminum or steel frame tank
- **SIZE** 29"x9" **WEIGHT** 5lbs
Part No. FMP



TRIAGE/TREATMENT AREA TARP

Triage Tarps are not disposable. They are constructed from vinyl-coated nylon for many years of use. The tarps are reinforced at the corners with brass grommets to use as tie-downs or suspension points. The 4 tarps (one each of red, blue, yellow and green) can be folded and stored in our convenient carrying bag. Each tarp is 10'x12'.



ALUMINUM LOW-FLOW STRAINER LOW-LEVEL

FEATURES

- Professionally designed and engineered for maximum pumping capacity
- Al-mag castings – proven to be the toughest in the industry
- The Low-Flow™ Low-Level will perform at maximum pumping capacity down to a water level of 1.5”-2” depending on your setup area
- Flow Rate – Tested with 6” Low-Flow™
- Low-Level rate is 1500-2000 GPM. The flow rates may vary due to the design of the pumper and the setup area of your pumper and FOL-DA-TANK
- Use of a male and female SST flange mounted on the side wall of your FOL-DA-TANK will eliminate the lifting factor when pumping from the side of the tank
- Long handle swivels with standard NH or NPSH threads
- Surface turbulence will not affect this strainer
- Optional 1.5” water transfer device available in sizes 4”-6” (Must specify when ordering)
- Each unit is fully guaranteed
- The Low-Flow™ Low-Level is easily stored in truck compartments and can be reattached to hard suction hose (NFPA 1142 compliant)

Part No.	Dimensions in/mm	Weight lb/kg
LFS 2.5	10"x10"x8 1/2"/250x250x220	7/3
LFS 3.0	10"x10"x8 1/2"/250x250x220	8/4
LFS 4.0	16"x13"x12"/410x330x310	23/11
LFS 4.5	16"x13"x12"/410x330x310	23/11
LFS 5.0	16"x13"x12"/410x330x310	24/11
LFS 6.0	16"x13"x12"/410x330x310	24/11



CLAPPER VALVE

This valve is specifically designed to maintain the prime between a pumper and a low level or floating strainer. When pumping through this valve GPMs will not be lowered. Made with 6061T6 aluminum tubing and al-mag castings. Clapper shown with use of 6” low-level strainer. **SIZES** 1.5”-6”



POWER JET SIPHON

The Power Jet Siphon is designed for use with two or more FOL-DA-TANKs. The siphon connects to a hard suction hose and assists the transfer of water from one tank to another. This keeps the main tank full of water for drafting as the secondary tank is refilled. The construction features include durable al-mag alloy, aircraft quality tubing and 1.5” female assist by 4”-6” discharge couplings. Standard threads are NST with other threads available. STORZ and CAM fittings are available upon request. (NFPA 1142 compliant)



IN-LINE POWER JET SIPHON

The In-Line Power Jet Siphon is designed for use with two or more FOL-DA-TANKs. When the tanks are not close together, an In-Line Power Jet Siphon attached to two hard suction hoses assists water transfer from one tank to another. This keeps the main tank full of water for drafting as the secondary tank is refilled. In-Line Power Jet Siphons can also be used in ponds, creeks or lakes to help transfer water to tankers and pumpers. The In-Line Power Jet Siphon will also assist you with lift from a pond or creek that is lower than the level of the pumper truck. When using the In-Line Power Jet Siphon water or air can be used in the pumping process. Special attachments are available when using air. The construction features include: durable al-mag alloy, aircraft quality tubing and 1.5” female assist by 4”-6” discharge couplings. Standard threads are NST with other threads available. STORZ and CAM fittings are available upon request. (NFPA 1142 compliant)



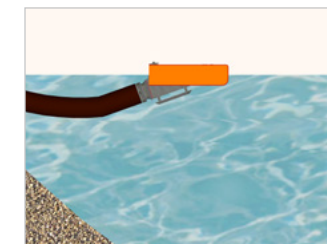
SELF-LEVELING FLOAT DOCK STRAINER

The Float Dock® Strainer is a valuable piece of equipment that can save the day in many firefighting situations. Float Dock® lets you use the water in farm ponds or streams, both shallow and deep, and with a FOL-DA-TANK. Because it operates below scum and debris and above sand and muck, it screens out the materials that wear out impellers, packing and bearings. Since Float Dock® strainers are self-leveling, there are no whirlpools or suction loss. Each unit is fully guaranteed. (NFPA 1142 compliant)

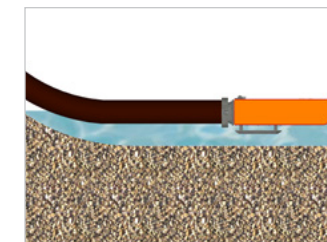
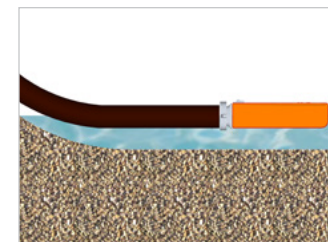
FEATURES

- Professionally designed and engineered for maximum pumping capacity
- Polyethylene molded float with molded in carry handle (handle can be used for tie-off and retrieval)
- No need for a vortex plate, float prevents any whirlpooling
- Self-leveling
- Al-mag castings - Proven to be the toughest in the industry
- Long handle swivels with standard NH or NPSH threads
- 20-30% more open area at the intake
- Detach strainer and use separately as a “Box Strainer”
- All Float Dock® are available in all aluminum construction up to 8”
- Float Dock® drafts in as little as 5”/13 cm of water
- Optional riser will convert the strainer box into a low-level strainer
- 6” is recommended for pump rated at 1500-2000 GPM

Part No.	Float Only Dimensions in/mm	Strainer Only Dimensions in/mm	Weight lb/kg
FDS 2.5	5"x15"x18"/130x380x470	4"x6"x14"/100x150x360	16/7
FDS 3.0	5"x15"x18"/130x380x470	4"x6"x14"/100x150x360	16/7
FDS 4.0	7"x21"x26"/180x530x670	7"x8"x15"/180x250x470	13/14
FDS 4.5	7"x21"x26"/180x530x670	7"x8"x15"/180x250x470	32/15
FDS 5.0	7"x21"x26"/180x530x670	7"x8"x15"/180x250x470	32/15
FDS 6.0	7"x21"x26"/180x530x670	7"x8"x15"/180x250x470	33/15
FDS 8.0	All Aluminum Pontoon Style		



DEEP DRAFT – Strainer drafts from a few inches below surface where water is cleanest. Note how hose weight tilts strainer position while float remains level. *Right photo*



SHALLOW DRAFT – Note how Float Dock drafts in as little as 5”/130mm depth without any whirlpooling or loss of suction. *Right photo shown with riser*

STRAINER WITH RISER

- Floating strainer
- Low-level strainer
- Box strainer

Part No. *FDSR*



FIRE DEPARTMENT MODEL

SELF-SUPPORTING TANK



The self-supporting frameless portable water tanks have been designed to meet the most stringent requirements of rural/urban fire fighting. Problems with inadequate or unusable supplies of water are eliminated by the use of open top self-supporting portable water tanks. In remote areas the self-supporting tanks are designed for standby water containment and water shuttling situations and they provide a continuous portable water supply. In remote areas, the SST may be filled by pumping water from a natural water source, such as a stream or creek, with a small gas-operated pump. As the self-supporting tank begins to fill with water, its unique design allows it to become self-supporting automatically. The SST does not require any additional supporting framework, assembly or frame installation. When no longer in use, the SST may be quickly drained through a fitting on the side. The SST is totally collapsible and easily stored in its own compact storage bag. It can be stored in the side or back of a truck, or in the cargo compartment of a helicopter.

FEATURES

- Easy one-man setup
- Ethafoam collar – No need to inflate
- All self-supporting tanks are supplied with one threaded flange coupling installed.
- **SIZES** 1.5”-6”
- NST or NPSH, male or female (Specify Choice)
- Any number and size of hose connections can be added for bottom drafting
- All seams welded for longer life (See Warranty)
- Heavy-duty vinyl
- Easily repairable
- Storage bag included

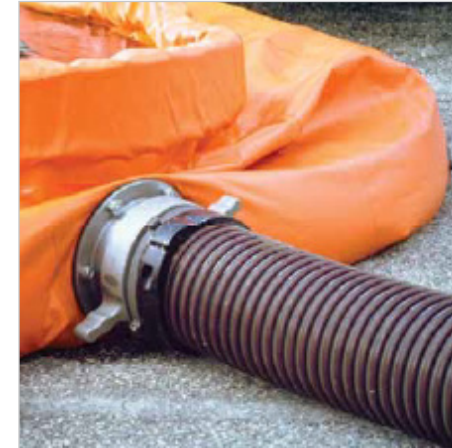
APPLICATIONS

Fire Fighting, Water Relay, Water Storage, Mixing Tank and Hazardous Waste

COLORS



Colors shown are approximate



ALUMINUM THREADED FLANGES

Standard NST Threads – Male or Female

OPTIONS

- NST
- NPSH
- STORZ
- CAM and GROOVE
- INNER and OUTER FLANGE KIT AVAILABLE
- CALL FOR OTHERS

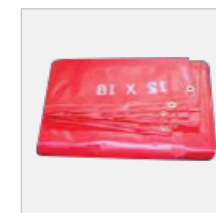
Part No.	Size in/mm
FLC-1.5	1.5"/40
FLC-2.0	2"/50
FLC-2.5	2.5"/60
FLC-3.0	3"/80
FLC-4.0	4"/100
FLC-4.5	4.5"/110
FLC-5.0	5"/130
FLC-6.0	6"/150

Part No.	Volume US gal/liters	Open Dimensions ft/m (H x Top Dia. x Base Dia.)	Folded Dimensions (Approx.) in/mm (L x Dia.)	Weight lb/kg
SSTFD-500	500/1900	2'8"x5'6"x6"/0.81x1.5x2	24"x17"/610x430	50/34
SSTFD-1000	1000/3800	2'8"x7'3"x8'10"/0.81x2.2x2.7	26"x18"/660x460	60/27
SSTFD-1500	1500/5600	2'8"x9'2"x11'10"/0.81x2.8x3.6	26"x20"/660x510	70/31
SSTFD-2000	2000/7500	2'8"x10'x12'5"/0.81x3x3.8	26"x20"/660x510	75/34
SSTFD-2500	2500/9500	2'8"x12'x13'6"/0.81x3.7x4	34"x22"/860x560	95/43
SSTFD-3000	3000/11300	2'8"x13'x14'9"/0.81x4x4.5	34"x22"/860x560	105/48
SSTFD-4000	4000/15000	2'8"x14'x18"/0.81x4.3x4.9	36"x34"/910x610	110/50
SSTFD-5000	5000/19000	2'8"x17'x19"/0.81x5.2x5.8	38"x26"/970x660	130/59
SSTFD-6000	6000/22700	2'8"x17'8"x21'2"/0.81x5.4x6.45	40"x28"/1016x710	150/67

ACCESSORIES



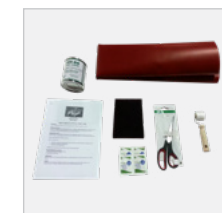
GROUND COVERS



TOP COVER



STORAGE BAG



PATCH KITS



HOSE STAND

FOREST SERVICE MODEL

SELF-SUPPORTING TANK



ALUMINUM THREADED FLANGES

Standard NST Threads – Male or Female

OPTIONS

- NST
- NPSH
- STORZ
- CAM and GROOVE
- INNER and OUTER FLANGE KIT AVAILABLE
- CALL FOR OTHERS

Part No.	Size in/mm
FLC-1.5	1.5"/40
FLC-2.0	2"/50
FLC-2.5	2.5"/60
FLC-3.0	3"/80
FLC-4.0	4"/100
FLC-4.5	4.5"/110
FLC-5.0	5"/130
FLC-6.0	6"/150

Part No.	Volume US gal/liters	Open Dimensions ft/m (H x Top Dia. x Base Dia.)	Folded Dimensions (Approx.) in/mm (L x Dia.)	Weight lb/kg
SSTFS-500	500/1900	3'x5'x6'6"/0.9x1.5x2	24"x17"/610x430	50/23
SSTFS-1000	1000/3800	4'x7'x8'2"/1.2x2x2.5	26"x18"/660x460	60/27
SSTFS-1200	1200/4500	4'x7'x8'10"/1.2x2x2.7	26"x20"/660x510	60/27
SSTFS-1600	1600/6000	4'x7'x9'6"/1.2x2x2.9	26"x20"/660x510	75/34
SSTFS-1800	1800/6800	4'x7'x9'10"/1.2x2x3	26"x20"/660x510	75/34
SSTFS-2000	2000/7500	4'x7'5"x10'8"/1.2x2.3x3.2	26"x20"/660x510	75/34
SSTFS-2500	2500/9500	4'x8'x12'6"/1.2x2.4x3.8	34"x22"/860x560	95/43
SSTFS-3000	3000/11300	4'x9'10"x13'1"/1.2x3x4	34"x22"/860x560	105/48
SSTFS-4000	4000/15000	4'x12'2"x16'10"/1.2x3.7x5	36"x34"/910x610	110/50
SSTFS-4800	4800/18200	5'x11'x16"/1.5x5x3.3	38"x26"/970x660	110/50
SSTFS-5000	5000/19000	4'x13'x17'6"/5.3x4x1.2	38"x26"/970x660	130/59
SSTFS-6000	6000/22700	5'x12'x17"/1.5x3.7x5.3	40"x28"/1016x710	150/67
SSTFS-10000	10000/36320	6'8"x12'x19'8"/2x3.7x6	44"x36"/1120x920	200/91
SSTFS-14000	14000/54500	7'9"x12'x21'8"/2.4x3.7x6.6	48"x38"/1210x970	250/113
SSTFS-20000	20000/75700	8'x18'x24'/2.44x5.5x7.3	48"x60"/1210x1520	400/181

FEATURES

- Special high sides
- Totally self-supporting
- Ethafoam collar – No need to inflate
- All self-supporting tanks are supplied with one threaded flange coupling installed. **SIZES** 1.5"–6", NST or NPSH, male or female (specify choice)
- Any number and size of hose connections can be added for bottom drafting
- All seams welded for longer life (See Warranty)
- Heavy-duty vinyl
- Easily repairable
- Storage bag included
- Easy lift grab handles are placed evenly around the base of the tank for easy setup
- For 6,000 to 20,000-plus tanks we use 40 oz weight fabric

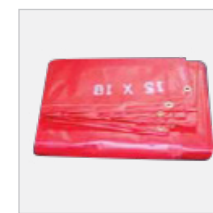
APPLICATIONS

Fire Fighting, Water Relay, Water Storage, Mixing Tank and Hazardous Waste

ACCESSORIES



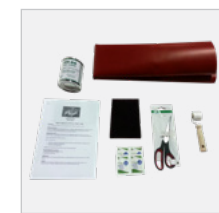
GROUND COVERS



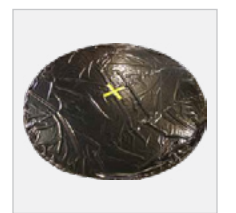
TOP COVER



STORAGE BAG



PATCH KITS



IMPACT PAD



QUICK ASSEMBLE DBL-HI® 30 oz VINYL

The Quick Assemble DBL-HI® can be transported by helicopter or truck into remote areas for easy setup. The DBL-HI® frame is constructed from aircraft-quality aluminum with al-mag snap button connections. The liner is suspended from heavy-duty tension straps with quick release snap clips. The liner design relieves the pressure on the frame and adapts to the contour of the setup site. All parts are stored in a convenient storage bag for easy transport. (GSA Approved)

Part No.	Volume <i>US gal</i>	Diameter x Height <i>ft</i>	Weight <i>lb</i>
DBLH-3000 QC	3000	10'x6'	200
DBLH-4000 QC	4000	11'x6'	230
DBLH-5000 QC	5000	12'x6'	255

PORTABLE FRAMED DECON POOLS

TYPE A/HMT

FEATURES

- Sets up in seconds
- No assembly required
- Keep contaminated liquids contained
- Aluminum frames available
- 3/4" GHT Brass shutoff valve
- Frame is resistance welded 7/8" steel
- Chemical resistant or standard vinyl

Part No.	Volume <i>US gal/liters</i>	Dimensions <i>ft/m (W x L x H)</i>	Weight <i>lb/kg</i>
A/HMT-180	180/700	4'x4'x18"/1.2x1.2x0.46	65/30
A/HMT-300	300/1100	5'x5'x18"/1.5x1.5x0.46	80/36
A/HMT-360	360/1300	4'x8'x18"/1.2x2.4x0.46	85/38
A/HMT-540	540/2000	4'x12'x18"/1.2x3.7x0.46	90/41
A/HMT-810	810/3000	6'x12'x18"/1.8x3.7x0.46	105/48



ROL-LA-TANK®

TYPE I

ROL-LA-TANK® is the latest in relay storage tanks to provide temporary storage of liquids in remote areas. The lightweight tank can be easily assembled by one person. Just unroll the tank, insert the support corners and hook the liner to the top snap clips. ROL-LA-TANK® has the advantages of a framed tank with the mobility of a self-supporting tank. The interior or exterior frame design can conform to uneven ground to prevent rolling. The liner is constructed from industrial-strength vinyl with aluminum flanges available from 1.5" to 3" with male or female threads. Optional forestry quick connects and PVC flanges are also available. Comes with heavy-duty storage bag. The ROL-LA-TANK® is also a great resource for oil spill containment and oil spill cleanup.

Standard liner fabric is 22 oz vinyl available in red, yellow, orange, blue, or black. Optional liner fabrics are 28 oz vinyl, chemical resistant.

Part No.	Stored Dimensions <i>in (L x W x H)</i>	Filled Dimensions <i>ft (base L x base W x H)</i>	Top Opening <i>ft</i>	Weight <i>lb</i>
RLT-250	34"x14"x14"	4'4"x4'4"x35"	3'x3'	35
RLT-500	48"x17"x17"	6'x6'x35"	4'x4'	40
RLT-1000	48"x17"x17"	8'x8'x35"	5'9"x5'9"	60
RLT-1500	48"x17"x17"	9'x9'x35"	7'5"x7'5"	66
RLT-2000	48"x17"x17"	12'x12'x35"	8'x8'	90
RLT-2500	48"x17"x17"	13'7"x13'7"x35"	12'x12'	115
RLT-3000	48"x17"x17"	15'x15'x35"	12'9"x12'9"	118



ROL-LA-TANK®

TYPE II

The ROL-LA-TANK® TYPE II is a quick assemble relay storage tank that provides temporary storage of liquids in remote areas. This lightweight tank can be easily assembled by one person using the snap-button connections. The ROL-LA-TANK® TYPE II is constructed from aircraft-quality aluminum with interchangeable supports. The liner is constructed from industrial-strength vinyl with aluminum or PVC flanges available from 1.5" to 3" with male or female threads. The frame and liner are stored in a heavy-duty storage bag with 2" seat belt webbing carry handles. The ROL-LA-TANK® TYPE II is also a great resource for oil spill containment and oil spill cleanup.

Standard liner fabric is 22 oz vinyl available in red, yellow, orange, blue, or black. Optional liner fabrics are 28 oz vinyl, chemical resistant.

FEATURES

- Lightweight
- No tools required
- Quick setup
- Compact storage
- Convenient to transport

Part No.	Diameter x Height <i>ft</i>	No. of Legs/ Rails	Weight <i>lb</i>
RLT II 500	6'x3'	6/6	55
RLT II 1000	8'x3'	6/6	75
RLT II 1500	10'x3'	6/6	77
RLT II 2000	11'6"x3'	8/8	90
RLT II 2500	12'6"x3'	8/8	95
RLT II 3000	13'8"x3'	8/8	110



MULTIFUNCTIONAL HELICOPTER TANK



Part No.	72F	134F
Volume US gal/liters	72/270	134/510
Filled Dimensions in/mm	45"x39"/1140x1000	53"x43"/1350x1100
Folded Dimensions in/mm	21"x20"x8"/530x510x200	19"x26"x4.5"/480x660x120
Discharge	1" hose w/ .75" spigot	1" hose w/ .75" spigot
Filler	4" Diameter	4" Diameter
Weight lb/kg	12/5	14/8

Part No.	FLY200	FLY300
Volume US gal/liters	240/900	360/1360
Filled Dimensions in/mm	27"x29"x8"/680x740x200	30"x32"x12"/760x810x280
Discharge	1.5" Ball Valve	1.5" Ball Valve
Filler	4" Diameter	4" Diameter
Weight lb/kg	25/12	35/16
Filled Weight lb/kg	2030/919	3100/1400

FEATURES

- Pyramid shape blivets
- Heavy-duty vinyl
- Transportable by helicopter or truck
- Heavy-duty harness
- Kevlar thread
- Sling harness webbing
- Potable water tanks available

APPLICATIONS

Filling Back Pack Tanks, Potable Water, Foam Retardants, Extinguishing Duff Embers, Small/Light Pumps and Gravity Feed Reservoirs

GRAY WATER TANK

APPLICATIONS

Firefighting in remote areas, Brush Firefighting, Construction Sites and Decon Waste Storage



POTABLE WATER TANK

APPLICATIONS

Drinking Water, Clean Shower Water, Rainwater Harvesting and Livestock Troughs



CHEMICAL RESISTANT TANK

APPLICATIONS

Portable Chemical and Liquid Storage



FEATURES

- Potable water fabric NSF/ANSI 61 standard
- Compact – easy to store
- Resists chemical contamination, mildew, rot and solar heat
- RF welded seams for longer life
- Severe weather tolerance to -40° F
- Fills and empties in minutes by pump or gravity flow
- Easily handled by one man
- 1.5"/40mm ball valve with female threads
- Large 4"/100 mm diameter fill opening
- Transportable by truck
- XR-5 used for chemical resistant bladders

Part No. Gray Water	Part No. Potable Water	Part No. Chemical Resistant	Volume US gal/liters	Filled Dimensions in/m (L x W x H)	Weight lb/kg
GW-25	PW-25	CR-25	25/95	24"x36"x8"/0.61x.91x0.2	10/4.5
GW-50	PW-50	CR-50	50/189	36"x52"x9"/0.91x1.3x0.23	14/6.4
GW-75	PW-75	CR-75	75/284	42"x54"x9"/1.1x1.4x0.23	16/7.3
GW-100	PW-100	CR-100	100/379	4'6"x4'10"x16"/1.4x1.5x0.41	18/8.6
GW-150	PW-150	CR-150	150/568	60"x60"x12"/1.5x1.5x0.3	20/9.1
GW-250	PW-250	CR-250	250/946	60"x84"x14"/1.5x2.1x0.35	23/10.4
GW-275	PW-275	CR-275	275/1000	6'6"x6'16"/2x1.8x0.41	25/11.3
GW-300	PW-300	CR-300	300/1136	66"x84"x14"/1.7x2.1x0.35	30/13.6
GW-525	PW-525	CR-525	525/1900	8'3"x5'4"x18"/2.5x1.7x0.46	33/15
GW-800	PW-800	CR-800	800/3000	10'x6'x2'/3x1.8x0.6	42/19
GW-1140	PW-1140	CR-1140	1140/4300	12'x7'x2'/3.7x2x0.6	58/26
GW-1250	PW-1250	CR-1250	1250/4732	114"x14'8"x18"/2.9x3.8x0.46	60/27
GW-1340	PW-1340	CR-1340	1340/5000	14'x7'x2'/4.3x2x0.6	64/29
GW-1500	PW-1500	CR-1500	1500/5670	14'11"x9'5"x2'/4.6x2.9x0.6	67/31
GW-2000	PW-2000	CR-2000	2000/7500	10'5"x12'x2'/3.2x3.7x0.6	82/37
GW-2500	PW-2500	CR-2500	2500/9460	12'7"x14'x2'/3.9x4.3x0.6	90/44
GW-3000	PW-3000	CR-3000	3000/11300	11'10"x14'x2'6"/3.6x4.3x0.7	104/47
GW-4000	PW-4000	CR-4000	4000/15140	18'x14'x3'/5.5x4.3x0.9	120/55
GW-5000	PW-5000	CR-5000	5000/19000	14'7"x18'10"x3'/5.5x4.3x0.9	142/64

FEATURES

- Self-supporting
- Closed top—prevents contamination
- Lightweight
- Easily transportable
- Potable water (special order)
- Optional ball valves 1.5"-2.0"
- Heavy-duty vinyl
- Optional fabrics: NSF/FDA or chemical resistant
- Additional flange can be installed on tank



FOAM WALLS

TYPE GF

Containment basins are open top containment units for temporary storage of oil or contaminated liquids. The containment basins also serve as temporary dikes around tanks. They are portable and can be set up in the field in minutes.

FEATURES

- Foam walls
- Vinyl
- Lightweight
- Portable

APPLICATIONS

Equipment Wash-down, Truck/Vehicle Wash-down, Haz/Mat Decontamination, Drip Pads, Overtuned Truck Containment, Temporary Holding of Contaminants, Sorbents and Other Materials

Part No.	Volume US gal	Dimensions ft (W x L x H)	Weight lb/kg
G-484	79	4'x8'x4"	22/10
G-664	89	6'x6'x4"	30/14
G-10104	247	10'x10'x4"	45/20
G-10204	495	10'x20'x4"	58/26
G-15204	742	15'x20'x4"	110/50
G-10404	990	10'x40'x4"	118/54
G-14304	1039	14'x30'x4"	180/82
G-10504	1230	10'x50'x4"	195/89
G-14504	1700	14'x50'x4"	207/94
G-15604	2227	15'x60'x4"	220/100

Puncture-resistant Ground Covers are recommended. Any size available in chemical resistant or standard vinyl.



AIR TUBE SIDES

TYPE E

Convenient portable containment system for quick and temporary containment of hazardous materials. The portable inflatable dam is also ideal for cleaning and decontaminating all types of equipment. Custom sizes available. All units are shipped in a heavy-duty storage bag with lifting straps.

Part No.	Volume US gal/liters	Dimensions ft/m (W x L x H)	Weight lb/kg	Required Air Volume cu ft
E-PD-750	750/2800	10'x10'x17"/3x3x0.43	100/45	70
E-PD-1250	1250/4700	10'x12'x17"/4x4x0.43	135/61	75
E-PD-1800	1800/6800	13'x13'x17"/4x4x0.43	150/68	80
E-PD-3400	3400/12800	18'x18'x17"/5.5x5.5x0.43	200/90	130
E-PD-6100	6100/23000	24'x24'x17"/7.3x7.3x0.43	250/114	170
E-PD-7600	7600/28700	45'x16'x17"/14x5x0.43	400/181	220
E-PD-10800	10800/40900	32'x32'x17"/10x10x0.43	500/227	230



ALUMINUM L BRACKETS

TYPE F

Part No.	Volume US gal/liters	Dimensions ft/m (W x L x H)
FPD-666	135/511	6'x6'x6"/1.8x1.8x0.15
FPD-6612	270/1022	6'x6'x12"/1.8x1.8x0.3
FPD-886	240/900	8'x8'x6"/2.4x2.4x0.15
FPD-8812	480/1817	8'x8'x12"/2.4x2.4x0.3
FPD-10106	375/1419	10'x10'x6"/3.1x3.1x0.15
FPD-101012	750/2839	10'x10'x12"/3.1x3.1x0.3
FPD-12126	540/2044	12'x12'x6"/3.7x4x0.15
FPD-121212	1080/4088	12'x12'x12"/3.7x9.1x0.15
FPD-12306	1350/5110	12'x30'x6"/3.7x9.1x0.15
FPD-123012	2690/10182	12'x30'x12"/3.7x9.1x0.3
FPD-12506	2250/8516	12'x50'x6"/3.7x15.2x0.15
FPD-125012	4500/17034	12'x50'x12"/3.7x15.2x0.3
FPD-16406	2400/9084	16'x40'x6"/4.9x12.2x0.15
FPD-164012	4800/18168	16'x40'x12"/4.9x12.2x0.3
FPD-202012	3000/11355	20'x20'x12"/6.1x6.1x0.3
FPD-205012	7500/28389	20'x50'x12"/6.1x15.3x0.3

MINI-DAM®

For use along with forestry pumps and other hazardous containment. Required by USFS with use of pumps and gas cans.

SIZES 3'x3'x4", 4'x4'x4", 5'x5'x4" and 5'x10'x5"

FABRICS AVAILABLE 22 oz Vinyl, HPR® and chemical resistant vinyl



DECON BERMS CONTINUOUS AIR CHAMBER

Part No.	Volume US gal	Dimensions ft (W x L x H)	Weight lb
GA-446	60	4'x4'x6"	10
GA-486	120	4'x8'x6"	19
GA-666	135	6'x6'x6"	19
GA-10106	375	10'x10'x6"	40
GA-15156	840	15'x15'x6"	65
GA-12306	1350	12'x30'x6"	100
GA-14266	1365	14'x26'x6"	125
GA-16406	2400	16'x40'x6"	150
GA-16506	3000	16'x50'x6"	195
GA-16706	4200	16'x70'x6"	225





FOL-DA-TANK.com

ADDRESS

1275 W. 11th Street
P.O. Box 110
Milan, Illinois 61264

PHONE

1-800-637-8265
1-309-787-3500

FAX

1-309-787-3635

EMAIL

info@FOL-DA-TANK.com