

# FIRE CATALOG



PREVENTING INJURIES,  
**SAVING LIVES**™

**Little  
Giant**  
Ladder Systems

**CLIMB ON**



GSA# GS-07F-475AA

## COMPANY HISTORY

### Little Giant's Why – Preventing Injuries, Saving Lives

Hal and Brigitte Wing built their company on a strong foundation – the guiding principle that every rung, every rivet, and every weld matters because every person matters. This principle is the reason Little Giant continues to innovate and improve climbing equipment today. Many have asked us why we invest so much into research and development. The simple answer – we are in business to prevent injuries and save lives. Every day at least 2,000 people are injured while using a ladder. Over 100 of them suffer a long-term or even permanent disability. And every day one person dies, never returning home to family and friends. These numbers are staggering when you think of each individual's life and the people who love them and are left behind.

This unique, fundamental purpose drives Little Giant Ladder Systems to be the safety and innovation leader in climbing systems and professional access equipment. We have partnered with safety professionals all over the country to develop real solutions to real safety problems. In the past five years alone, the company has received over 50 patents on safety improvements in climbing equipment design.

Professional access equipment like the Adjustable Safety Cage®; the HyperLite™ SumoStance® wide-base, leveling extension ladder constructed with Little Giant's new patent pending Hi-Viz Green fiberglass; the Claw™ Limited Arrest System, and the Jumbo Step™ are just a few of the new innovations that are changing the way professionals and “pro do-it-yourselfers” use ladders . . . and we are just getting started!





**COMPLIES WITH NFPA STANDARDS 1931 / 1932**  
**Counts as ISO footage on apparatus**

SAFETY  INSIGHT™  
**PHOTO-LUMINESCENCE**  
**GLOWING RUNGS**



**PATENTED**  
**ROCK LOCK™**  
**ADJUSTERS**

Easier than ever to use

**REFLECTIVE AND**  
**HEAT SENSITIVE**  
**LABELS**

**TIP & GLIDE™**  
**WHEELS**

Easy transport and handling

**ROOF / RAFTER**  
**HOOKS**

Hook to a rafter or truss for more stability



**LEVELING**  
**OUTRIGGERS**

Adjusts over uneven ground

**Quick and easy to use with gloved hands and turn-out gear**

**5-YEAR LIMITED WARRANTY • TYPE IAA 375 LBS**

| NSN Number       | Part Number | Model | Stepladder Min Height | Stepladder Max Height | Stepladder Min Footprint | Stepladder Max Footprint | Stepladder Highest Standing Level | Stepladder Max Reach* |
|------------------|-------------|-------|-----------------------|-----------------------|--------------------------|--------------------------|-----------------------------------|-----------------------|
| 5540-01-626-9016 | 15197-303   | 17    | 4'                    | 7'                    | 3' 4"                    | 5' 3"                    | 1' 11.5" - 4' 10"                 | 11' 4"                |

| Extension Ladder Min Height | Extension Ladder Max Height | Extension Highest Standing Level | Extension Max Reach* | Rung Width | Base Width      | Storage Height | Storage Depth | Weight |
|-----------------------------|-----------------------------|----------------------------------|----------------------|------------|-----------------|----------------|---------------|--------|
| 8' 11"                      | 14' 11"                     | 5' 9" - 11' 7"                   | 18' 1"               | 1.5"       | 1' 9.5" (21.5") | 4' 8"          | 10.5"         | 54 lbs |

\*A 5'6" person with a 12" vertical reach



**CERTIFIED TO NFPA STANDARDS 1931 / 1932**  
 Counts as ISO footage on apparatus



**RATCHET LEVELERS**

Built-in dual Ratchet™ Levelers



**METAL ROCK LOCK™ ADJUSTERS**

**REFLECTIVE AND HEAT SENSITIVE LABELS**

**TIP & GLIDE™ WHEELS**

Easy transport and handling

5-YEAR LIMITED WARRANTY • TYPE IA 300 LBS

| Part Number | Model | Stepladder Min Height | Stepladder Max Height | Stepladder Max Footprint | Stepladder Highest Standing Level | Stepladder Max Reach* |
|-------------|-------|-----------------------|-----------------------|--------------------------|-----------------------------------|-----------------------|
| 15187-882   | 17    | 4' 1"                 | 7' 1"                 | 3' 2"                    | 1' 11.5" - 4' 10"                 | 11' 4"                |
| 15182-882   | 22    | 5' 1"                 | 9' 1"                 | 3' 10"                   | 2' 10" - 6' 7"                    | 13' 1"                |

| Extension Min Height | Extension Max Height | Extension Highest Standing Level | Extension Max Reach* | Rung Width | Base Width | Storage Height | Storage Depth | Weight |
|----------------------|----------------------|----------------------------------|----------------------|------------|------------|----------------|---------------|--------|
| 9'                   | 15'                  | 5' 9" - 11' 7"                   | 18' 1"               | 1.5"       | 2'         | 4' 7"          | 9"            | 39 lbs |
| 11'                  | 19'                  | 7' 10" - 15' 6"                  | 22' 0"               | 1.5"       | 2' 3.5"    | 5' 7"          | 9"            | 47 lbs |

\*A 5'6" person with a 12" vertical reach



**COMFORT STEP™  
& WIDE RUNGS**

Feels like standing  
on solid ground



**TIP & GLIDE™  
WHEELS**

Easy transport  
and handling



**OPTIONAL  
AIRDECK™ WITH  
HANDRAIL**

**ONE LADDER  
MULTIPLE  
USES**

Use the right type  
and right size ladder  
for every job

1-YEAR LIMITED WARRANTY • TYPE IAA 375 LBS

**NONCONDUCTIVE  
FIBERGLASS SIDE RAILS**

| NSN Part Number  | Part Number | Model    | Stepladder Min Height | Stepladder Max Height | Stepladder Min Footprint | Stepladder Max Footprint | Stepladder Highest Standing Level | Stepladder Max Reach* |
|------------------|-------------|----------|-----------------------|-----------------------|--------------------------|--------------------------|-----------------------------------|-----------------------|
| 5440-01-572-7841 | 15130-001   | 5' - 8'  | 5'                    | 8'                    | 3' 5"                    | 5' 2.5"                  | 5' 8"                             | 12' 4"                |
| 5440-01-584-4563 | 15131-001   | 6' - 10' | 6'                    | 10'                   | 4' 0"                    | 6' 5"                    | 7' 7"                             | 14' 1"                |

| Comfort Step Area | Base Width | Max Rung Width | Storage Height | Storage Depth | Weight | Shipping Weight |
|-------------------|------------|----------------|----------------|---------------|--------|-----------------|
| 9" x 11 3/4"      | 2' 3.5"    | 4"             | 5' 1.5"        | 8.5"          | 34 lbs | 40 lbs          |
| 9" x 11 3/4"      | 2' 8"      | 4"             | 6' 1"          | 9"            | 41 lbs | 53 lbs          |

Replace -001 with -920 to include AirDeck

\*A 5'6 person with a 12" vertical reach

# SAFETY CAGE®



## HELPS PREVENT FALLS DUE TO OVERREACHING

Fully enclosed platform with 5" kick plate and midspan



## AVOID INJURIES FROM MISSING THE BOTTOM RUNG

Ground Cue™ indicator alerts user to last step

## TIP & GLIDE™ WHEELS

For quick, easy transport



1-YEAR LIMITED WARRANTY • TYPE IA 300 LBS

NONCONDUCTIVE FIBERGLASS SIDE RAILS

| Part Number | Model | Comparable Stepladder Size | Highest Standing Level | Max Reach* | Footprint | Storage Width at Base | Storage Height | Weight   |
|-------------|-------|----------------------------|------------------------|------------|-----------|-----------------------|----------------|----------|
| 19606       | 6'    | 8'                         | 5' 8"                  | 12' 2"     | 5' 4"     | 2' 9"                 | 10' 6"         | 66.5 lbs |
| 19608       | 8'    | 10'                        | 7' 6"                  | 14'        | 6' 7"     | 3'                    | 12' 6"         | 77 lbs   |
| 19610       | 10'   | 12'                        | 9' 5"                  | 15' 11"    | 7' 11"    | 3' 3"                 | 14' 7"         | 90 lbs   |

\*A 5'6 person with a 12" vertical reach

• Platform size: 18" x 22"  
• Guardrail Height: 42"

# SAFETY STEP™



## IT'S NOT JUST A STEPSTOOL

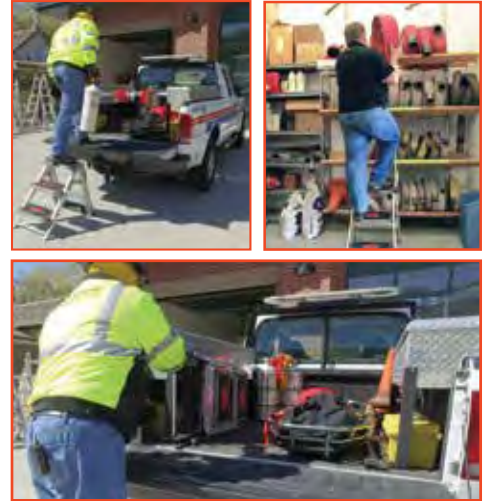
Spacious, sturdy steps feel like standing on the ground

### STABLE, SAFE, AND PORTABLE

With wide, slip-resistant steps

### TIP & GLIDE™ WHEELS

Easy transport



1-YEAR LIMITED WARRANTY • RATED TO HOLD 300 LBS CAPACITY

| NSN Number       | Part Number | Model         | Stepladder Max Height | Highest Standing Level | Max Reach* | Base Footprint | Storage Width | Weight   | Shipping Weight |
|------------------|-------------|---------------|-----------------------|------------------------|------------|----------------|---------------|----------|-----------------|
| 5440-01-260-2135 | 10210BA     | 2 Step w/ Bar | 2' 8"                 | 1' 6"                  | 8'         | 1' 11"         | 1' 9.5"       | 16 lbs   | 18.5 lbs        |
| 5440-01-608-0019 | 10310BA     | 3 Step w/ Bar | 3' 7"                 | 2' 2"                  | 8' 8"      | 2' 9"          | 1' 9.5"       | 21 lbs   | 24 lbs          |
| --               | 10410BA     | 4 Step w Bar  | 4' 6"                 | 2' 11"                 | 9' 5"      | 3' 8.5"        | 1' 9.5"       | 26.5 lbs | 30 lbs          |

\*A 5'6" person with a 12" vertical reach

• Platform Size: 14" x 9"  
• Storage Depth: 5"

## ACCESSORIES

### TELESCOPING PLANK



(Ladder not included)

1-YEAR LIMITED WARRANTY • ONE MAN 250 LBS RATING

### WORK PLATFORM



(Ladder not included)

1-YEAR LIMITED WARRANTY • ONE MAN 375 LBS CAPACITY

| NSN Part Number  | Part Number | Model                      | Weight   |
|------------------|-------------|----------------------------|----------|
| 5440-01-535-0583 | 10069       | 6' - 9' Telescoping Plank  | 30.5 lbs |
| --               | 10813       | 8' - 13' Telescoping Plank | 42.5 lbs |
| 5440-01-100-6439 | 10915       | 9' - 15' Telescoping Plank | 44 lbs   |

| NSN Part Number  | Part Number | Model         | Weight  |
|------------------|-------------|---------------|---------|
| 1730-01-092-1812 | 10104       | Work Platform | 3.5 lbs |

### Preventing Injuries, Saving Lives

Everyday nearly 2,000 people are injured while using a ladder. Nearly 100 of them suffer a long-term or permanent disability. And every day, one person dies, never returning home to family and friends. These numbers are staggering when you think of each individual's life, and especially the people who love them.

We are driven not by the number of ladders we build, but by the individuals who use them—the hard-working men and women of the world who are the backbone of industry and progress. They put their lives at risk to make things happen. They are dedicated working people with families, hopes and dreams.

If we can help one more of these people get home safely each day, we will have done our job—that's what gets us out of bed each morning. Ladders will always be a necessity in nearly all walks of life, so we need to find ways to prevent these accidents and save lives.

We believe there are two ways to prevent these accidents: First, providing effective, frequent, and relevant safety training; and second, designing safer climbing and access equipment.

### Free Ladder Safety Training

As a member of the American Ladder Institute (ALI), Little Giant helped develop the best online ladder safety training, available at [www.laddersafetytraining.org](http://www.laddersafetytraining.org). This free, online service allows managers to track the training of their employees. It also provides a pre-test, an informative training video, a post-test and a certificate of completion.

Sometimes hands-on experience and live training are the most effective methods in preventing injuries. Regardless of the type of brand of ladder you use or the industry in which you work, you can register your company for free, on-site ladder safety training from a qualified ladder safety expert. You can visit [www.laddersafetyhub.com](http://www.laddersafetyhub.com) and fill out the sign-up form.

### Designing for Human Nature

Although it is extremely important, training alone is not enough. Even an experienced, well-trained professional can fall off an ordinary, traditional ladder. Our new professional climbing equipment helps operators avoid the three most common causes of ladder-related injuries or fatalities:

1. Repeated handling of heavy climbing equipment
2. Using the wrong ladder for the job; using the right ladder the wrong way
3. Overreaching

In an era of worldwide progress and innovation, the fundamental designs sold by most ladder companies have remained unchanged, even though the incidence of ladder injuries has remained way too high for decades. The ladder industry can do better, and we are leading the charge. We are building our professional access equipment to prevent as many falls as possible. **We believe it is better to build a fence at the top of a cliff rather than park an ambulance at the bottom.**

Perhaps our long-held manufacturing creed sums up our commitment to the world—every weld, every rivet, every rung, and every person matters!

**CLIMB ON®**

1198 North Spring Creek Place  
Springville, Utah 84663 USA

P: 888-320-2488

F: 801-489-3685

[www.LittleGiantLadders.com](http://www.LittleGiantLadders.com)  
[fire.gov@ladders.com](mailto:fire.gov@ladders.com)

GSA# GS-07F-47AA

CAGE 56193

